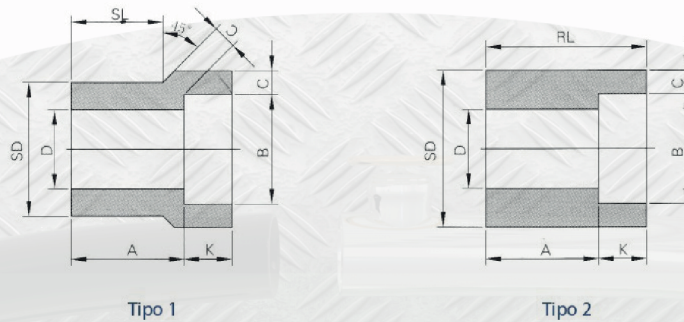




## CONEXIONES SOCKET WELD

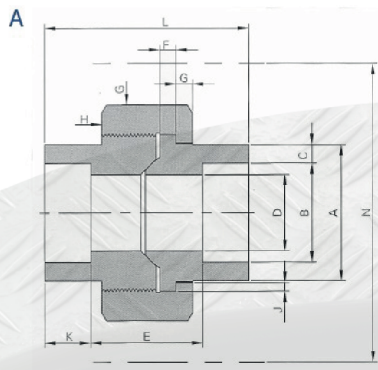
### SW COPLEREDUCIDO SW



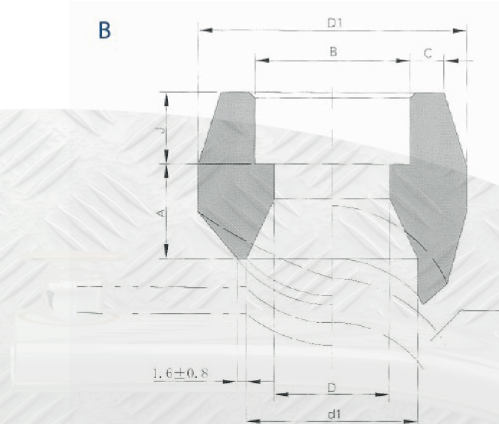
Diámetro Nominal		Tipo		Diámetro Interior	Profundidad de Caja	Diámetro de Rosca	Longitud del Tubo		Diámetro Interior del Tubo		Pared	
DN	NPS	3000	6000	B	Kmin	SD	A		D		Cmin	
							30000	60000	30000	60000	30000	60000
10x8	3/8 x 1/4	1	1	14.3	9.5	17.1	19.1	21.3	9.2	6.4	3.8	4.6
15x10	1/2x3/8	1	1	17.7	9.5	21.3	20.6	23.1	12.5	9.1	4.0	5.0
		1	1	14.3	9.5		20.6	20.6	9.2	6.4	3.8	4.6
20x15	3/4x1/2	1	1	21.9	9.5	26.7	22.4	25.4	15.8	11.8	4.7	6.0
		2	1	17.7	9.5		15.7	22.4	12.5	9.1	4.0	5.0
		2	2	14.3	9.5		17.5	22.4	9.2	6.4	3.8	4.6
25x20	1x3/4	1	1	27.3	12.5	33.4	23.9	28.5	20.9	15.5	4.9	7.0
		2	1	21.9	9.5		15.7	28.5	15.8	11.8	4.7	6.0
		2	2	17.7	9.5		17.5	22.4	12.5	9.1	4.0	5.0
		2	2	14.3	9.5		19.1	23.9	9.2	6.4	3.8	4.6
32x25	1-1/4x1	1	1	34.0	12.5	42.2	25.4	30.2	26.6	20.7	5.7	7.9
		2	2	27.3	12.5		17.5	20.6	20.9	15.5	4.9	7.0
		2	2	21.9	9.5		19.1	22.4	15.8	11.8	4.7	6.0
		2	2	17.7	9.5		20.6	23.9	12.5	9.1	4.0	5.0
		2	2	14.3	9.5		22.4	25.4	9.2	6.4	3.8	4.6
40x32	1-1/2x1-1/4	1	1	42.8	12.5	48.3	28.5	35.1	35.1	29.5	6.1	7.9
		2	1	34.0	12.5		17.5	26.6	26.6	20.7	5.7	7.9
		2	2	27.3	12.5		19.1	20.9	20.9	15.5	4.9	7.0
		2	2	22.0	9.5		20.6	15.8	15.8	11.8	4.7	6.0
		2	2	9.5	9.5		22.4	12.5	12.5	9.1	4.0	5.0
50x40	2x1-1/2	1	1	48.9	12.5	60.3	31.8	38.9	40.9	34.0	6.4	8.9
		2	2	42.8	12.5		20.6	23.9	35.1	29.5	6.1	7.9
		2	2	34.0	12.5		22.4	25.4	26.6	20.7	5.7	7.9
		2	2	27.3	12.5		23.9	26.9	20.9	15.5	4.9	7.0
		2	2	21.9	9.5		25.4	28.5	15.8	11.8	4.7	6.0
65x50	2-1/2x2	1	1	61.4	16.0	73.0	46.0	42.7	52.5	42.9	6.9	10.9
		2	2	48.9	12.5		35.1	35.1	40.9	34.0	6.4	8.9
		2	2	42.8	12.5		36.6	36.6	35.1	29.5	6.1	7.9
		2	2	34.0	12.5		38.1	38.1	26.6	20.7	5.7	7.9
		2	2	27.3	12.5		39.6	38.1	20.9	15.5	4.9	7.0
80x65	3x2-1/2	1	1	74.1	16.0	88.9	38.1	57.2	62.7	54.0	8.8	11.9
		2	2	61.4	16.0		25.4	31.8	52.5	42.9	6.9	10.9
		2	2	48.9	12.5		28.5	31.8	40.9	34.0	6.4	8.9
		2	2	42.8	12.5		30.2	31.8	35.1	29.5	6.1	7.9
		2	2	34.0	12.5		31.8	31.8	26.6	20.7	5.7	7.9



## CONEXIONES SOCKET WELD



Unión SW clase 3 mil



Socketlet

### MSS SP-97

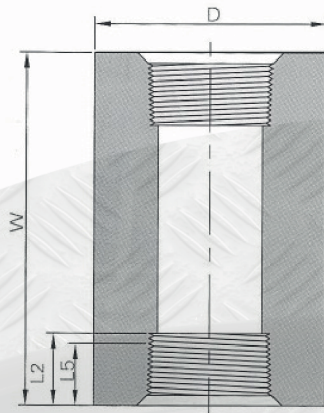
Diámetro Nominal		Final del Tubo	Diámetro Interior	Pared de Caja	Paso	Longitud del Tubo	Brida Macho	Tuerca	Asiento	Profundidad de Caja	Largo	Claro de Tuerca
DN	NPS	A <sub>min</sub>	B <sub>min</sub>	C <sub>min</sub>	D	E	F <sub>min</sub>	G <sub>min</sub>	J <sub>min</sub>	K <sub>min</sub>	L <sub>mon</sub>	N
6	1/8	21.8	10.9	3.2	6.1	20.7	3.2	3.2	1.2	9.7	41.4	51
8	1/4	21.8	14.3	3.3	8.5	20.7	3.2	3.2	1.2	9.7	41.4	51
10	3/8	25.9	17.7	3.5	11.8	23.8	3.4	3.4	1.4	9.7	46	56
15	1/2	31.2	21.9	4.1	15	23.8	3.7	3.7	1.5	9.7	49	59
20	3/4	37.1	27.3	4.3	20.2	28.6	4.1	4.1	1.7	12.7	56.9	66
25	1	45.5	34	5	25.9	30.2	4.6	4.4	1.9	12.7	62	79
32	1-1/4	54.9	42.8	5.3	34.3	36.6	5.3	5.2	2.1	12.7	71.1	94
40	1-1/2	61.5	48.9	5.5	40.1	38.1	5.8	5.6	2.3	12.7	76.5	112
50	2	75.2	61.2	6	51.7	41.4	6.6	6.4	2.7	15.7	86.1	132
65	2-1/2	91.7	73.9	7.7	61.2	56.9	7.5	7.1	3.1	15.7	102.4	150

### MSS SP-83

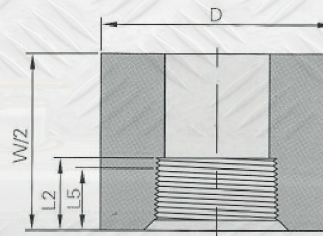
Diámetro Nominal		Diámetro Nominal de la Salida		Prof. de Caja	Cara a Ranura		DE de Conexión		Espesor de Caja p/Soldar		Diámetro del Corte	
DN	NPS	DN	NPS	J <sub>min</sub>	A <sub>max</sub>		D1 <sub>min</sub>		C <sub>min</sub>		D1 <sub>nom</sub>	
					3000	6000	3000	6000	3000	6000	3000	6000
8-900	1/4-36	6	1/8	9.5	10	-	27	-	3.18	-	16	-
10-900	3/8-36	8	1/4	9.5	10	-	27	-	3.78	-	16	-
15-900	1/2-36	10	3/8	9.5	13	-	30	-	4.01	-	19	-
20-900	3/4-36	15	1/2	9.5	16	24	38	47	4.67	5.97	24	19
25-900	1-36	20	3/4	12.5	16	25	47	53	4.90	6.96	30	25
32-900	1-1/4-36	25	1	12.5	22	29	56	63	5.69	7.92	36	33
40-900	1-1/2-36	32	1-1/4	12.5	22	30	66	74	6.07	7.92	45	38
50-900	2-36	40	1-1/2	12.5	24	32	75	83	6.35	8.92	51	49
65-900	2-1/2-36	50	2	16.0	24	37	90	104	6.93	10.92	65	59
80-900	3-36	65	2-1/2	16.0	25	-	105	-	8.76	-	76	-
100-900	4-36	80	3	16.0	30	-	124	-	9.52	-	94	-
125-900	5-36	100	4	19.0	30	-	154	-	10.69	-	121	-



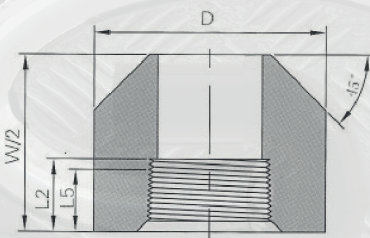
## CONEXIONES SOCKET WELD



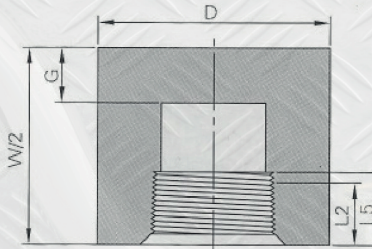
Cople NPT



Mediocople



Inserto NPT

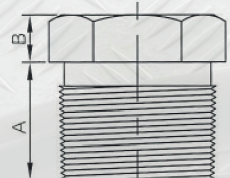
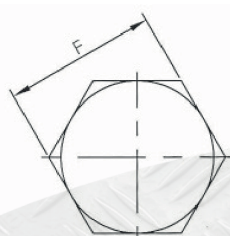


Tapón Cachucha

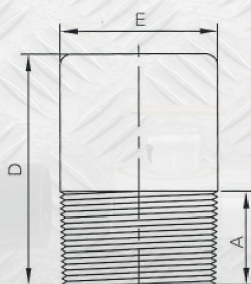
Diámetro Nominal		Punta a Punta	Punta a Punta		Diámetro Exterior		Fin Pared		Largo Rosca Macho	
DN	NPS	W	P		D		G <sub>min</sub>		L <sub>5min</sub>	L <sub>2min</sub>
		3000&6000	3000	6000	3000	6000	3000	6000		
6	1/8	32	19	-	16	22	4.8	-	6.4	6.7
8	1/4	35	25	27	19	25	4.8	6.4	8.1	10.2
10	3/8	38	25	27	22	32	4.8	6.4	9.1	10.4
15	1/2	48	32	33	28	38	6.4	7.9	10.9	13.6
20	3/4	51	37	38	35	44	6.4	7.9	12.7	13.9
25	1	60	41	43	44	57	9.7	11.2	14.7	17.3
32	1-1/4	67	44	46	57	64	9.7	11.2	17.0	18.0
40	1-1/2	79	44	48	64	76	11.2	12.7	17.8	18.4
50	2	86	48	51	76	92	12.7	15.7	19.0	19.2
65	2-1/2	92	60	64	92	108	15.7	19.0	23.6	28.9
80	3	108	65	68	108	127	19.0	22.4	25.9	30.5
100	4	121	68	75	140	159	22.4	28.4	27.7	33.0



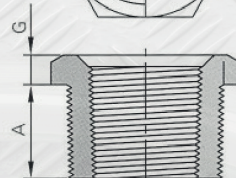
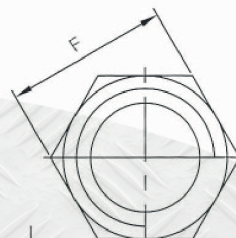
## CONEXIONES SOCKET WELD



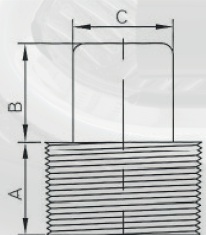
Tapón Macho Cab.



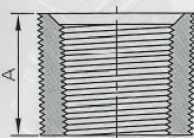
Tapón Macho Cab. Re-



Reducción Bushing



Tapón Macho Cab.



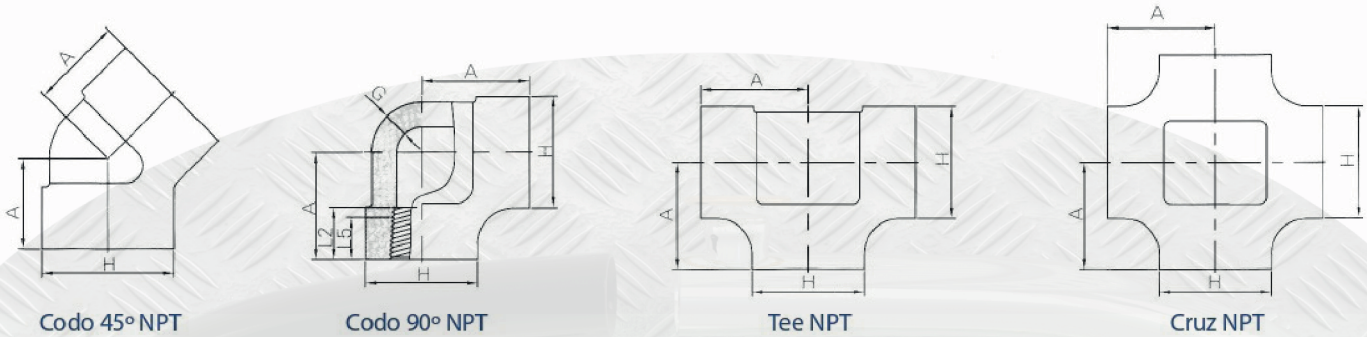
Blushing Lisa

Diámetro Nominal		Largo	Alto del Cuadro	Ancho de Cab. Cuad.	Diámetro de la Cabeza	Largo	Altura Cab. Hexagonal	Altura Cab. Hexagonal	Ancho de Cab. Hex.
DN	NPS	A <sub>min</sub>	B <sub>min</sub>	C <sub>min</sub>	E <sub>min</sub>	D <sub>min</sub>	H <sub>min</sub>	G <sub>min</sub>	F <sub>min</sub>
6	1/8	10	6	7	10	35	6	-	11
8	1/4	11	6	10	14	41	6	3	16
10	3/8	13	8	11	18	41	8	4	18
15	1/2	14	10	14	21	44	8	5	22
20	3/4	16	11	16	27	44	10	6	27
25	1	19	13	21	33	51	10	6	36
32	1-1/4	21	14	24	43	51	14	7	46
40	1-1/2	21	16	28	48	51	16	8	50
50	2	22	18	32	60	64	18	9	65
65	2-1/2	27	19	36	73	70	19	10	75
80	3	28	21	41	89	70	21	10	90
100	4	32	25	65	114	76	25	13	115





## CONEXIONES SOCKET WELD



Diámetro Nominal de la Tubería		Centro a Final						Diámetro Exterior de la Banda			Espesor Pared			Largo de la Rosca	
DN	NPS	A						H			G <sub>min</sub>			L <sub>5m</sub>	L <sub>2m</sub>
		90° Codo, Te, Cruz			45° Codos										
		2000	3000	6000	2000	3000	6000	2000	3000	6000	2000	3000	6000		
6	1/8	21	21	25	17	17	19	22	22	25	3.18	3.18	6.35	6.4	6.7
8	1/4	21	25	28	17	19	22	22	25	33	3.18	3.30	6.60	8.1	10.2
10	3/8	25	28	33	19	22	25	25	33	38	3.18	3.51	6.98	9.1	10.4
15	1/2	28	33	38	22	25	28	33	38	46	3.18	4.09	8.15	10.9	13.6
20	3/4	33	38	44	25	28	33	38	46	56	3.18	4.32	8.53	12.7	13.9
25	1	38	44	51	28	33	35	46	56	62	3.68	4.98	9.93	14.7	17.3
32	1 1/4	44	51	60	33	35	43	56	62	75	3.89	5.28	10.59	17.0	18.0
40	1 1/2	51	60	64	35	43	44	62	75	84	4.01	5.56	11.07	17.8	18.4
50	2	60	64	83	43	44	52	75	84	102	4.27	7.14	12.09	19.0	19.2